

# Single Phase Grid Connected Solar Photo Voltaic System Using Zeta Converter for Power Factor Improvement

<sup>1</sup>Shilpa M.Patil, <sup>2</sup>Ms.Komal P.Hole, <sup>3</sup>Mr.Manoj R.Wankhade

<sup>1,2,3</sup> Assistant Professor, Padm.Dr.V.B.Kolte College of Engineering, Malkapur Maharashtra, India

## ABSTRACT

Solar photovoltaic systems provide an attractive alternative source of power generation. As it can be placed near to the load centers when compared with other renewable source of generation. The rooftop PV system in general is grid connected and supports the off grid load with battery backup. A maximum power point is tracked using Zeta Converter with variation in the irradiances all throughout the year. This paper presents the design and analysis of both the active and reactive power control of a single-phase voltage source inverter (VSI) for grid-connected photovoltaic (PV) system. This paper proposes single phase synchronous reference frame (SRF) theory based current controlled PWM controller for the voltage source converter (VSC) to realize maximum generated power evacuation by maintaining the DC link voltage constant without battery support, low THD sinusoidal line synchronized current output, and limited reactive power compensation based on the unutilized capacity of the inverter. Zeta converter (Buck-boost) acts as a better alternative to MPPT has been proposed. MATLAB based simulation results shows the efficient working of rooftop PV with proposed control methodologies in grid connected mode with limited reactive power conditioning.

*Index Terms*— PV Array Mathematical model, Zeta Converter, VSC controller, SRF, MATLAB-Simulink

## 1. INTRODUCTION

ELECTRIC utilities and end users of electric power are becoming increasingly concerned about meeting the growing energy demand. Seventy five percent of total global energy demand is supplied by the burning of fossil fuels. But increasing air pollution, global warming concerns, diminishing fossil fuels and their increasing cost have made it necessary to look towards renewable sources as a future energy solution. Since the past decade, there has been an enormous interest in many countries on renewable energy for power generation. The market liberalization and government's incentives have further accelerated the renewable energy sector growth. Renewable energy source (RES) integrated at distribution level is termed as distributed generation (DG). The utility is concerned due to the high penetration level of intermittent RES in distribution systems as it may pose a threat to network in terms of stability, voltage regulation and power-quality (PQ) issues. It is therefore Distributed Generation (DGs) particularly single phase Solar PV systems which are major research area for grid integration, since these sources have huge opportunity of generation near load terminal [1]. The single phase DG's fed with PV source can be not only utilized for household use but the excess energy can be transferred to the grid through proper control scheme and adequate hardware. Control scheme based on instantaneous PQ theory has been presented in some literatures for single phase system [2]. Other control scheme such as synchronous reference frame (SRF) is mainly used with three phase system in which sinusoidal varying quantities are being transferred to dc quantities that provides better and precise control than PQ based control even under distorted condition of mains [3]. But SRF based control scheme can be customized for single phase which can't be utilized to get the desired dc quantity to generate required reference command. PV sources are interfaced with the grid through voltage source converters (VSC's). VSC's can be controlled either in PWM based voltage control method or hysteresis based current controlled method (HCC). HCC based controller gives fast response and better regulation but its major drawback lies with variable frequency. On the other hand the PWM based control gives fixed switching frequency that could be utilized easily for proper design of LC or LCL filters [4].

MPPT face problems in maintaining the voltage profile constant when there is change in irradiance. Zeta converter based system has proved more reliable and efficient than the MPPT based one. Zeta converter is also called as Buck-boost converter. A voltage follower approach is used for the control of Zeta DC-DC converter operating grid connected system. The DC link voltage is controlled by DC link capacitor. Vdc (sensed DC link voltage) is compared with Vdc\* (reference voltage) to generate an error signal which is the difference of Vdc\* and Vdc. The error signal is given to a PI (Proportional Integral) controller to give a controlled output. Finally,

the controlled output is compared with the high frequency saw tooth signal to generate PWM (Pulse Width Modulation) pulse for the MOSFET of the Zeta converter [7].

In this paper new control scheme based on SRF theory has been proposed for single phase rooftop PV grid connected system. The VSC controller is designed in taking the advantage of both current and voltage controller which is called current driven PWM based voltage controller. Through the VSC the maximum tracked power is pumped into the grid through proper control on DC link voltage. By maintaining the DC link voltage constant during operation, is ensured the total power being generated by PV transferred across the DC bus by the inverter to the grid. Apart from active power transfer the system could be well utilized for providing limited reactive power compensation based on available capacity of the VSC.

## 2. SYSTEM CONFIGURATION

Figure 1 depicts the schematic diagram of single phase grid connected PV system comprising PV panels, Zeta converter, tank capacitor, VSC and RL loads. Control based on tank capacitor voltage is used to control the transfer of maximum power to the grid via VSC. The direct voltage controlled current driven VSC keeps the voltage across the tank capacitor constant by regulating the power evacuation through voltage control. Proper design of LCL filter at the output of VSC filters out harmonics at the PCC. The conventional 3 phase SRF theory is modified to suit the single phase system. The modified SRF theory is applied to decompose the load current to generate the reference reactive power current command. Reference for the real current component is obtained by applying PI controller on the error between measured voltage and the reference voltage.

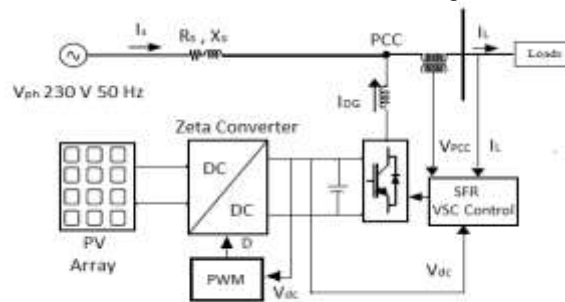


Fig. 1. Block diagram for system configuration of Single phase grid connected PV DG

### 2.1 PV Array

PV arrays are built up with combined series/parallel combinations of PV solar cells, which are usually represented by a simplified equivalent circuit model such as the one given in Fig. 1 and/or by an equation

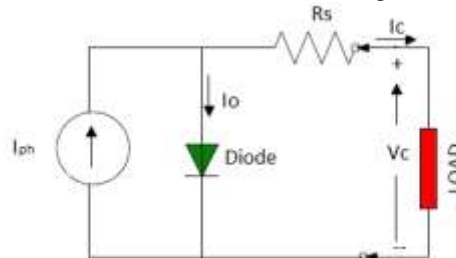


Fig. 2: Simplified-equivalent circuit of photovoltaic cell

The PV cell output voltage is a function of the photocurrent that mainly determined by load current depending on the solar irradiation level during the operation.

When Zeta converter is used by replacing the MPPT DC-DC Boost converter the results shows that Zeta converter is more reliable and efficient for the grid connected DG. The ripple in input inductor ( $\Delta I_L$ ) current is considered to be 10% and ripple in DC link voltage ( $\Delta V_{dc}$ ) as 4%.

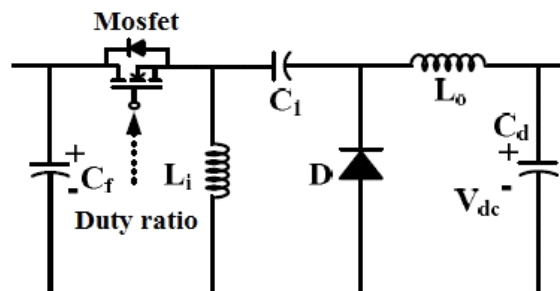


Fig.3 Zeta Converter

### 2.2 VSC Controller

The proposed system the 3 phase SRF based theory is modified for single phase system. The heart of the control scheme lays with correct estimation of phase voltage through phase locked loop (PLL), which is used for generation of unit template vectors. The output ‘ $\omega$ ’ of the PLL will be in phase with single phase voltage at PCC. For applying modified SRF theory to single phase system, phase voltage or current is assumed as alpha ( $\alpha$ ) component in  $\alpha$ - $\beta$  frame (stationary frame of reference), and  $\beta$  component is obtained by introducing phase delay of  $90^\circ$  to alpha components as shown in Fig. 3. Using modified SRF theory both DG and load currents are transformed into d-q components and passed through low pass filter (LPF) to obtain only DC components corresponding to fundamental frequency as shown in Fig. 3.

For such synchronized modified SRF theory based transformation  $I_d$  and  $I_q$  components corresponds to real and reactive power components respectively.

After transformation only  $\alpha$  component is used for signal generation. In the photovoltaic based grid connected system it is utmost important to extract MPP tracked power for economical operation and to avoid panels heating due to underutilization. To guarantee this, constant DC bus voltage is required to be maintained across DC link capacitor, and reference current is generated to obtain the command voltage reference for PWM control of the VSC as shown in Fig. 4.

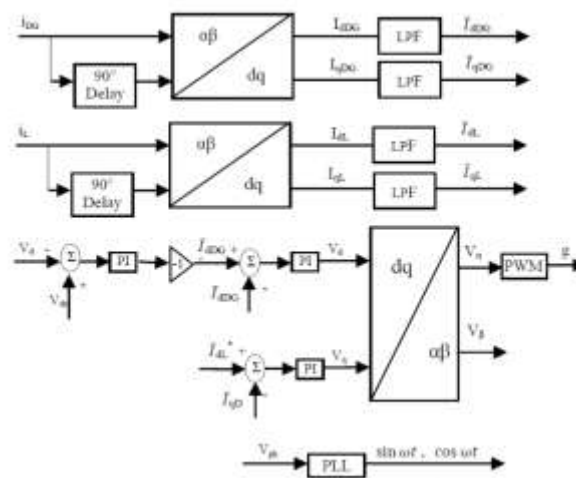


Fig. 4 VSC Control Scheme

The control forces the output current of VSC to closely follow the reference current. The DG’s main task is to send maximum power to the grid via VSC. In the event of varying insolation or during low insolation, the VSC capacity is not fully utilized for real power transfer. The unutilized capacity can be used for limited reactive power compensation. The depth of compensation is based on capacity remaining after deducting MPPT tracked PV power from the total capacity of VSC. In view of this reactive power component in load is determined and multiplied with ‘ $k$ ’ showing the selective or amount of power to be compensated as shown in Fig. 4. This reference reactive command is compared with DG ‘ $I_{qDG}$ ’ component and error is passed through PI controller to generate reference  $V_q^*$  component. This voltage reference d-q component is then reverse transformed to  $\alpha$ - $\beta$  using equations (17). Out of the two components in stationary frame of reference  $v_{\alpha}^*$  component is used for PWM gating signal generation.

### 2.3 LCL Filters

Using above circuit can be modeled as block diagram as shown in Fig. 5. Parameters for the given system is shown in table II and table I shows proposed LCL filter parameters for the given system.

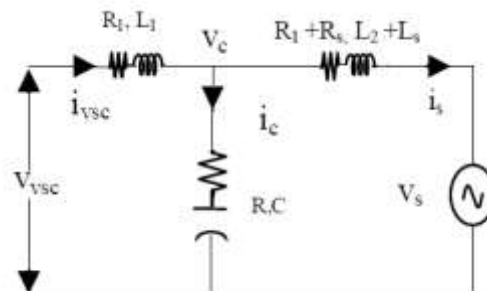


Fig. 5 LCL Filter circuit model

Table No. 1 LCL Filter Parameters

Parameters	Rating
L1	3 mH
L2	3 mH
Ls	0.3 mH
R1	0.02 Ω
R2	0.02 Ω
Rs	0.02 Ω
R	3 Ω
C	40 μF

Table No. 2 Grid Connected Parameters

Parameters	Rating
V <sub>ph</sub>	230 V
Supply Frequency	50 Hz
R <sub>L</sub>	4 Ω
L <sub>L</sub>	4 mH
DC Link Voltage	400 V
Maximum PV Power	8.5 kW
VSC Switching Frequency	2000 Hz
Zeta Converter Switching Frequency	45000 Hz

Table No. 3 Zeta Converter Parameters

Parameters	Rating
Vo (operating voltage input)	50-200 V
Vdc Output	400 V
Switching Frequency	45000 Hz
Li	2.463 mH
Lo	60 μH
C <sub>1</sub>	330 nF
C <sub>d</sub>	2500 μF

### 3. MATLAB-BASED SIMULATION AND RESULTS

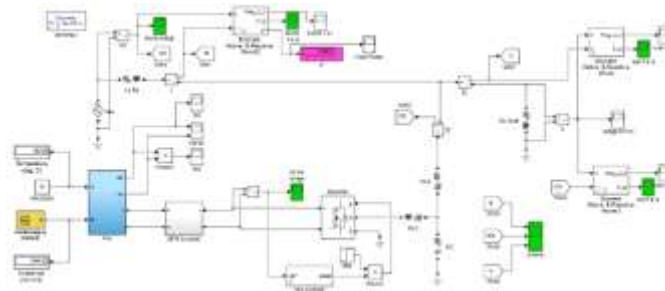


Fig.6: Matlab Model of Grid connected DG with Zeta converter

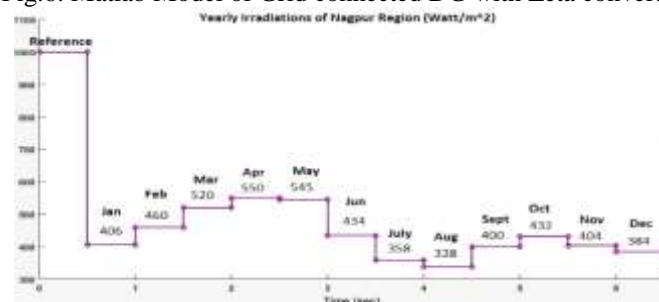


Fig.7 Yearly irradiation data of Nagpur Region Input to PVA

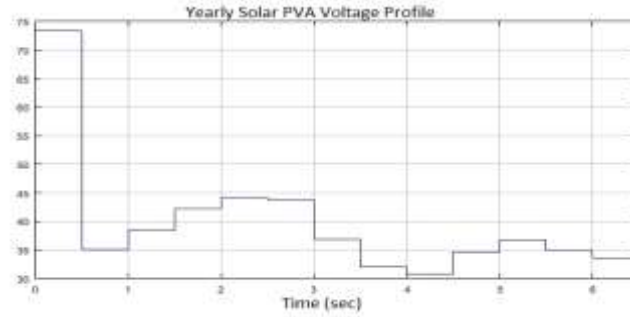


Fig.15: PVA Voltage Profile at different Irradiance (DG with Zeta Converter Controller)

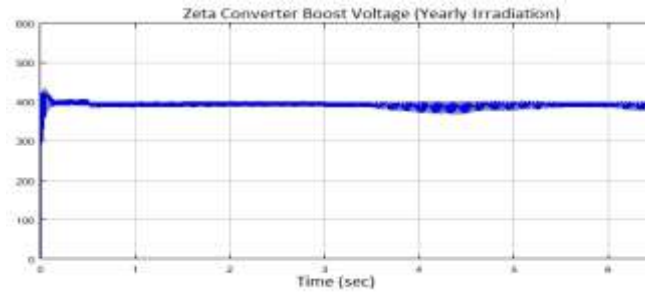


Fig.17: Vdc Boost Voltage profile at different irradiance (DG with Zeta Converter Controller)

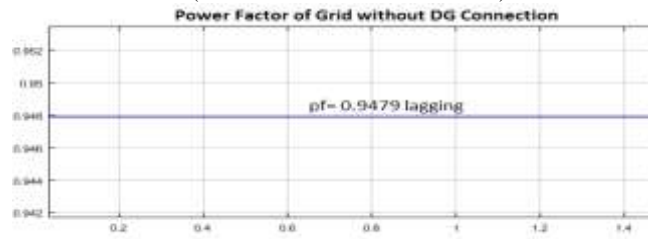


Fig.13: Power Factor without DG

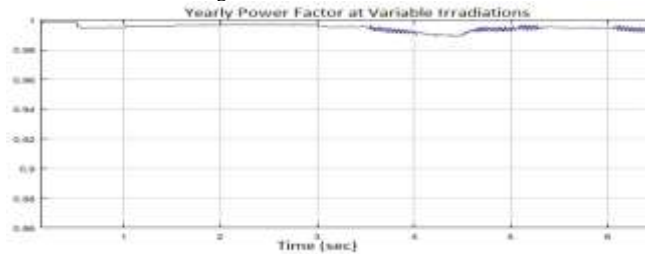


Fig.19: Power Factor at different irradiance (DG with Zeta Converter Controller)

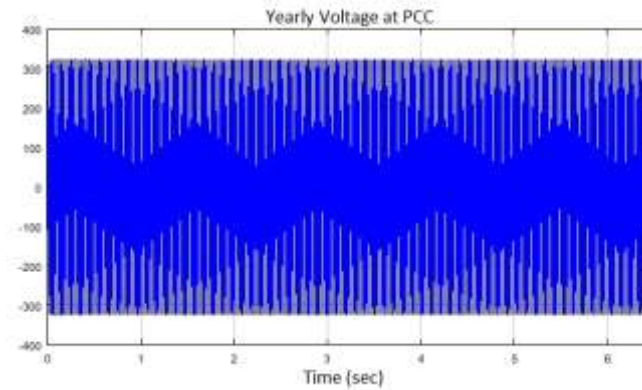


Fig.21: Voltage at PCC at different irradiance (DG with Zeta Converter Controller)

#### 4. RESULTS

The proposed new control on PV solar system will help accomplishing the following objectives:

- Increasing the utility of the Rooftop Solar PV system
- Power Factor improvement through reactive power compensation
- Incentives from the Utility for maintaining power factor near to unity

MPPT fails to provide required results when there are changes in irradiations. Zeta Converter provides a better alternative to MPPT controller when the irradiations are varied throughout the year.

From the experimental results PCC voltage is pure sinusoidal of 230 Volts, having frequency 50 Hz same as grid voltage and frequency.

#### 5. CONCLUSIONS

The ability of the proposed control scheme to evacuate MPP tracked power from the PV array and provide limited reactive power compensation with grid connected mode. The current controlled PWM controller inject adequate generated current for self-support of capacitor at DC bus and thereby providing storage less operation. Single phase SRF (Synchronous Reference Frame) based estimation is employed which provides rugged control with cost effective solution. The proposed SRF based approach enable the control for providing limited compensation of reactive power depending on available unutilized capacity of VSC. Comparative study and comparison between to MPPT with DC-DC boost converter and Zeta Converter for single phase grid connected PV system has been carried out. Power Factor is maintained near to unity even though there are changes in irradiations and also the limited reactive power compensation is provided by DG with Zeta converter.

#### 6. REFERENCES

- [1] H. Altas<sup>1</sup>, A.M. Sharaf "A Photovoltaic Array Simulation Model for Matlab-Simulink GUI Environment" ©2007 IEEE, Trabzon, Turkey, pp.341-345
- [2] Dr. Abu Tariq<sup>1</sup>, Mohammed Asim and Mohd. Tariq, "Simulink based modeling, simulation and Performance Evaluation of an MPPT for maximum power generation on resistive load" 2011 2nd International Conference on Environmental Science and Technology IPCBEE vol.6 (2011) © (2011) IACSIT Press, Singapore, pp. 397-401
- [3] Bhim Singh, *Fellow, IEEE* and Vashist Bist, "A Single Sensor Based PFC Zeta Converter Fed BLDC Motor Drive for Fan Applications", 978-1-4673-0766-6/12/\$31.00 ©2012 IEEE, pp. 1-6
- [4] A. L. Vyas, Neha Adhikari and Bhim Singh, "Design and Performance of Low Power Solar-PV Energy Generating System with Zeta Converter", 978-1-4673-2605-6/12/\$31.00 © 2012 IEEE, pp. 1-6
- [5] S. Samerchur, S. Premrudeepreechacharn, *Member, IEEE*, Y. Kumsuwun, and K. Higuchi, *Member, IEEE*, "Power Control of Single-Phase Voltage Source Inverter for Grid-Connected Photovoltaic Systems", 978-1-61284-788-7/11/\$26.00 ©2011 IEEE, pp. 1-6
- [6] J. BAUER, J. LETTL, Dept. of Electric Drives and Traction, Czech Technical University in Prague, "Solar Power Station Output Inverter Control Design", RADIOENGINEERING, VOL. 20, NO. 1, APRIL 2011, pp. 258-263
- [7] Jmjun Liu; Jun Yang; Zhaoan Wang "A New Approach for Single-Phase Harmonic Current Detecting and Its Application in a Hybrid Active Power Filter," IEEE conf., 1999
- [8] Guohong Zeng; Rasmussen, T.W.; Lin Ma; Teodorescu, R., "Design and control of LCL-filter with active damping for Active Power Filter," IEEE International Symposium on Industrial Electronics, pp. 2657-2562, 2010